



A FRAME AROUND THE LIGHT

Houses we helped *build.*

A portfolio of homes given depth, light, and a view — by the doors and windows that frame them.



WELCOME

We don't sell windows. We help build *homes*.

There is a moment, on every project, when the openings arrive. The frames come up, the glass goes in, and a room that was a box of grey plaster becomes a place to live. The light changes. The view arrives. The plan, finally, looks like a home.

That moment is our work. For more than a decade, Ventino has been making the doors and windows that frame the best new homes across India — quietly, precisely, and always in service of the architecture they belong to.

We have never thought of a window as a hole in a wall. A window is a threshold: the finely-calibrated membrane between sanctuary and world, an opening that protects without sealing you off. Every system in this book is built to hold that line.

This book is a small portfolio of recent projects. It is also, in part, an invitation — a look at what considered fenestration can do for a building, and a guide for anyone preparing to specify it.

Every door opens a story. Every window frames a dream. We are honoured to make both.

— THE VENTINO STUDIO
FARIDABAD, DELHI NCR

INSIDE THIS BOOK

In four houses, and one *philosophy*.

PART ONE • THE HOUSES

I	The Pavilion House <i>Brick, wood & a sheet of water</i>	04
II	The Courtyard House <i>A koi pond at eye level</i>	08
III	The Garden Villa <i>A modernist box, opened</i>	11
IV	The White House <i>Light, restraint, and a sanctum</i>	14

PART TWO • THE PRACTICE

—	What we make <i>Four families, one promise</i>	07
—	Choosing well <i>A short guide for the home-builder</i>	10
—	How we work <i>From the first sketch to the final seal</i>	16
—	A finish for every wall <i>The colour collection</i>	17
—	Get in touch <i>Studio, sales & service</i>	20

“A window is not a hole in a wall. It is the place where a wall finally lets the world in.”

A RESIDENCE IN BRICK & WOOD

The Pavilion *House.*

A great roof, a brick base, and a sheet of glass that turns a courtyard into a room.

A STUDY IN HORIZONTAL LINES

A house that knows *when to step aside.*

The brief asked for a family home that disappeared into its garden. The architect's answer was a great cantilevered roof over a base of handmade brick — and between them, the largest single run of glazing the project would accept.

Our part was to make that line of glass behave. Three-track sliders carry double-glazed units across the entire south face. A glass-walled water cube — fully framed in Ventino aluminium — punctures the plan, drawing a line of light from the front door to the dining table.

There are no visible mullions where they were not wanted, and reassuring weight where they were. On a summer evening it frames a garden; on a monsoon afternoon, it holds one back.

SYSTEMS USED

- Ventino 40 Pro Slider
- Ventino Grande 65 Entrance
- Ventino 50 Casement

GLAZING

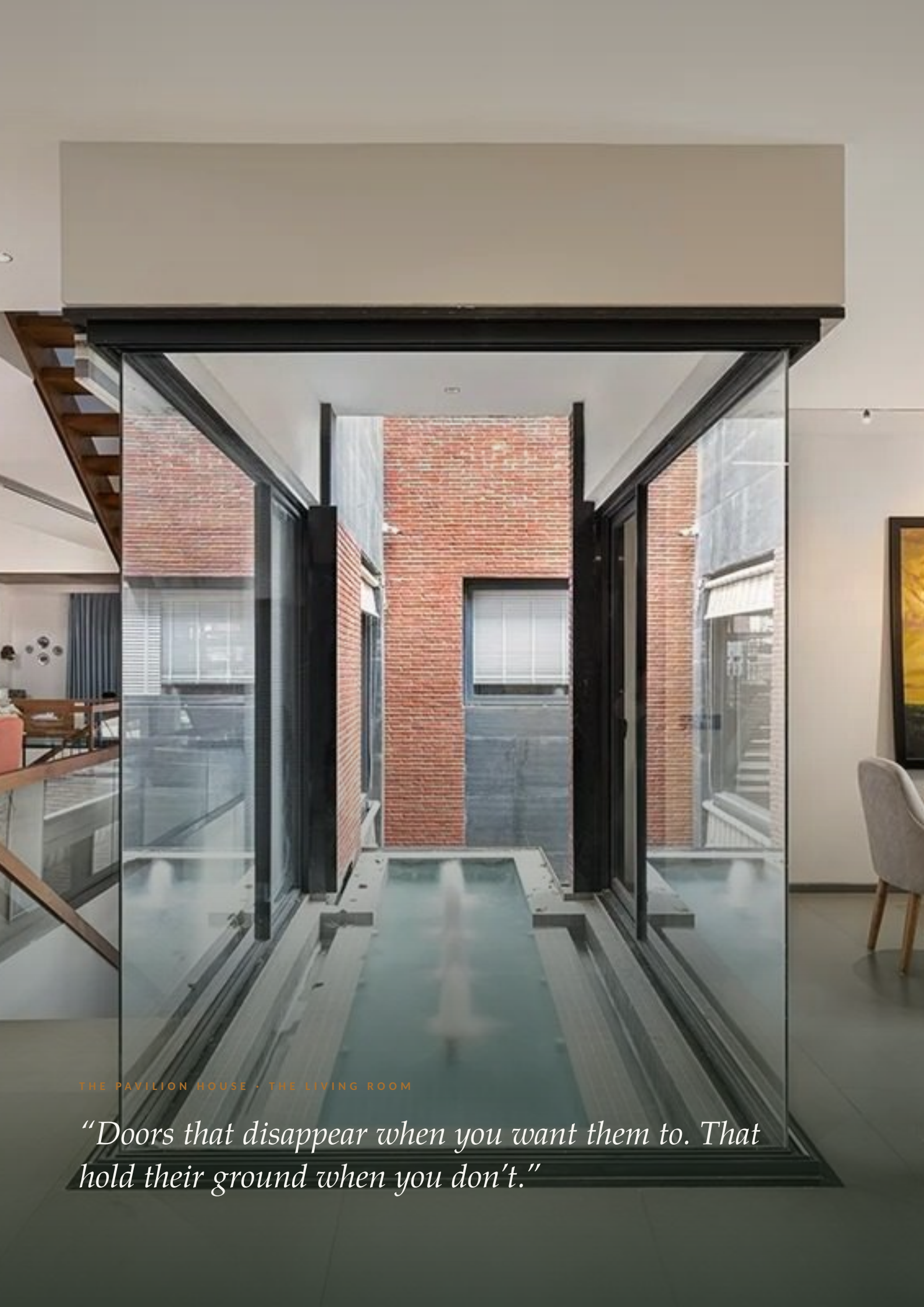
- 24 mm DGU throughout
- Acoustic interlayer
- Bronze-anodised frame

“We asked them for an invisible frame. They delivered something better — a frame you stop noticing.”

— OWNER, PROJECT ONE



THE DINING ROOM · FULL-HEIGHT SLIDERS DRAWING LIGHT TO THE TABLE



THE PAVILION HOUSE · THE LIVING ROOM

“Doors that disappear when you want them to. That hold their ground when you don’t.”

FOUR FAMILIES · ONE PROMISE

Every opening, in its *right system*.

We make doors and windows in four engineered families. Each is designed for a different kind of opening — but every one is built to the same standard of sealing, sound, and long, slow grace.

SYSTEM ONE · SLIDING

Walls of glass *that move sideways.*

For the wide opening. Slim aluminium sashes and a near-invisible interlock — track-mounted shutters that carry double glazing the length of a living room.

Reach — 4.2m vertical · 16ft openings · 24mm DGU

SYSTEM TWO · CASEMENT

Windows that *open all the way.*

For the everyday window. European-style hinged sashes — inside, outside, top-hung, or tilt-and-turn — with multi-point locks and grub-tight sealing.

Reach — 5mm single to 38mm DGU · tilt-and-turn hardware

SYSTEM THREE · GRANDE ENTRY

The front door, *at the right scale.*

For the threshold. A 65mm structural sash, engineered to carry door heights to four metres in a single leaf — without sag, without steel, without compromise to the sightline.

Reach — 4m single-leaf · 2m double-leaf · multipoint locking

SYSTEM FOUR · SLIDE & FOLD

The wall that *simply isn't there.*

For the room that prefers no walls. A top-hung sliding-and-folding architecture that collects to one side when invited — opening the entirety of a room to the entirety of a view.

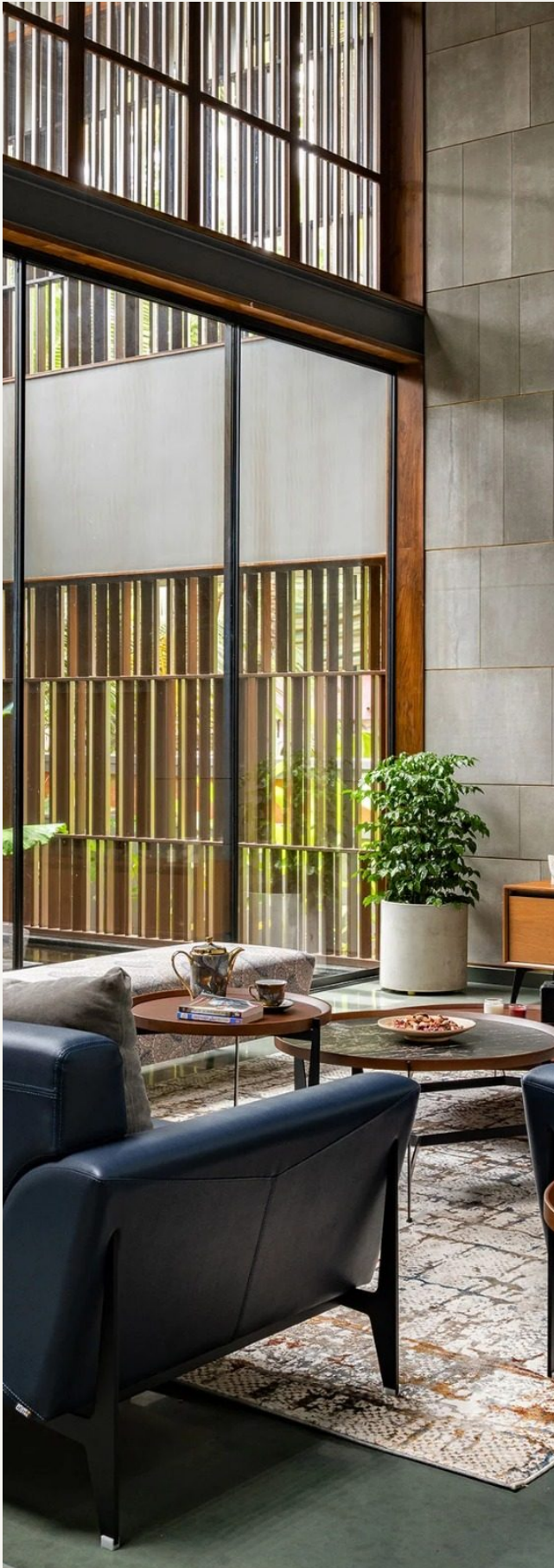
Reach — 5–36mm glazing · multi-panel · corner configurations

A specification of profiles, technical sections and load tables is available to architects and contractors on request.

A DOUBLE-HEIGHT LIVING ROOM

The Courtyard House.

A koi pond at eye level, a screen of vertical timbers, and a 7-metre run of glass that holds it all in.



LIVING ROOM · SEVEN-METRE GLAZED WALL FACING THE KOI POND

A ROOM WITH A STILL LIFE

The wall is a window. *The window is a view.*

The owner described what they wanted as “a Japanese tea room in a Gujarati city.” The architect translated that into a double-height living room facing a long, narrow koi pond — itself enclosed by a screen of vertical teak fins.

The framing problem was the obvious one: how to hold seven metres of glass against the south-west monsoon wind, without making the frames look heavy.

We used our 35 Pro slim sliding system across the lower band, with a fixed clerestory of 40 Casement units above. The structural mullion at the spring-line is a single 60mm box — concealed inside the slab. From inside, the screen reads as one continuous wall. From the pond side, you cannot see it at all.

SYSTEMS USED

Ventino 35 Pro Slider
Ventino 40 Casement
Fixed glazing units

SPECIFICATION

24 mm DGU
Anthracite powder-coat
7.2m glazed wall

“I had not realised how much a frame could shape the mood of a room.”

— OWNER, PROJECT TWO

A SHORT GUIDE FOR THE HOME-BUILDER

How to choose well, *opening by opening.*

The right system for an opening depends on three things: what the opening needs to do, where it is, and how it will be lived with. Here is what we ask first.

01

How wide is the opening?

Under 1.5m, almost any system works — start with a casement for ventilation, or a slider for view. Over 3m, the choice narrows: sliding for moving glass, slide-and-fold for a wall that disappears, or fixed glazing flanked by casement vents for the cleanest sightline.

03

What is it facing?

A busy main road needs double glazing with an acoustic interlayer. A west-facing balcony needs solar-control coatings. A monsoon-side opening needs the deep drainage channel of our Pro series. The exposure dictates the glass — and often the system around it.

02

How tall is the opening?

Up to 8 feet, our 29mm and 31mm Pro systems give the slimmest sightlines. Beyond 10 feet, we move to the 35 or 40 Pro — taller sashes engineered for wind load and heavier glass. For 14-foot openings, the 40 High End is the answer.

04

Who opens it, every day?

A 12-foot slider that takes both hands to move is a design failure, however slim. We size the sash, the roller, and the lock to the people in the home — not the catalogue. A child's window opens differently from a primary entrance; both should feel right.

A Ventino consultant will visit your site at any stage — from the framing of a new build to the renovation of an existing house — and recommend the right system, opening by opening. There is no charge for this visit.

A MODERNIST FAMILY VILLA

The Garden Villa.

A house arranged around a single covered terrace — and the line of glass that lets one room hold three views at once.

MODERNISM, RECOVERED

A floor plan that *faces every garden.*

The plot was generous, the brief restrained: three children, two grandparents, one large family, and a wish to see something green from every room. The architect's answer was a modernist box, lifted on a covered terrace, with the longest possible run of glass on three sides.

Forty-two metres of sliding doors carry the ground floor. The casement windows on the upper level — flanked by deep wooden reveals — give cross-ventilation in every bedroom. The double-leaf Grande entry, set into a wall of rusted Corten, weighs 240 kilograms but closes on a single finger.

The bronze-anodised finish carries the same tone from the front door to the kitchen vent — a small thing on paper, the kind of detail that lifts a good house into a quietly extraordinary one.

SYSTEMS USED

Ventino 40 Pro Slider
Ventino 50 Casement
Ventino Grande Entry

SPECIFICATION

30mm DGU
Bronze anodise
42m of sliding opening

*“The doors are the third thing a guest notices.
That is exactly the right number.”*

— OWNER, PROJECT THREE



FIRST-FLOOR LIVING ROOM · CASEMENT WINDOWS WITH DEEP WOODEN REVEALS

SIX PROMISES, KEPT

A frame is only worth *what it keeps out.*

Aluminium is the most considered material in modern fenestration — but the material only delivers if the system around it is engineered properly. These are the six things every Ventino installation does, every day, without you noticing.

I

Acoustic insulation

Multi-chambered profiles paired with EPDM gaskets reduce ambient noise transmission by up to half. The difference between living near a road, and living above it.

II

Weather tightness

Drainage channels, sloped sills, and concealed weep paths route water away before it ever finds an entry. Designed for the Indian monsoon — not despite it.

III

Dust & air seal

Triple-line sealing across stile, head and sill keeps conditioned air in and dust out. Measurable in lower energy bills, quieter HVAC, and cleaner sills.

IV

Wind load

Reinforced sash members and structural mullions perform at vertical heights conventional materials cannot reach — certified to 3.0 kPa wind pressure on the High-End series.

V

Security & locking

Multipoint, concealed locking on every door and operable window. Burglar-resistant by engineering — not by retrofit grilles bolted onto a finished installation.

VI

Longevity

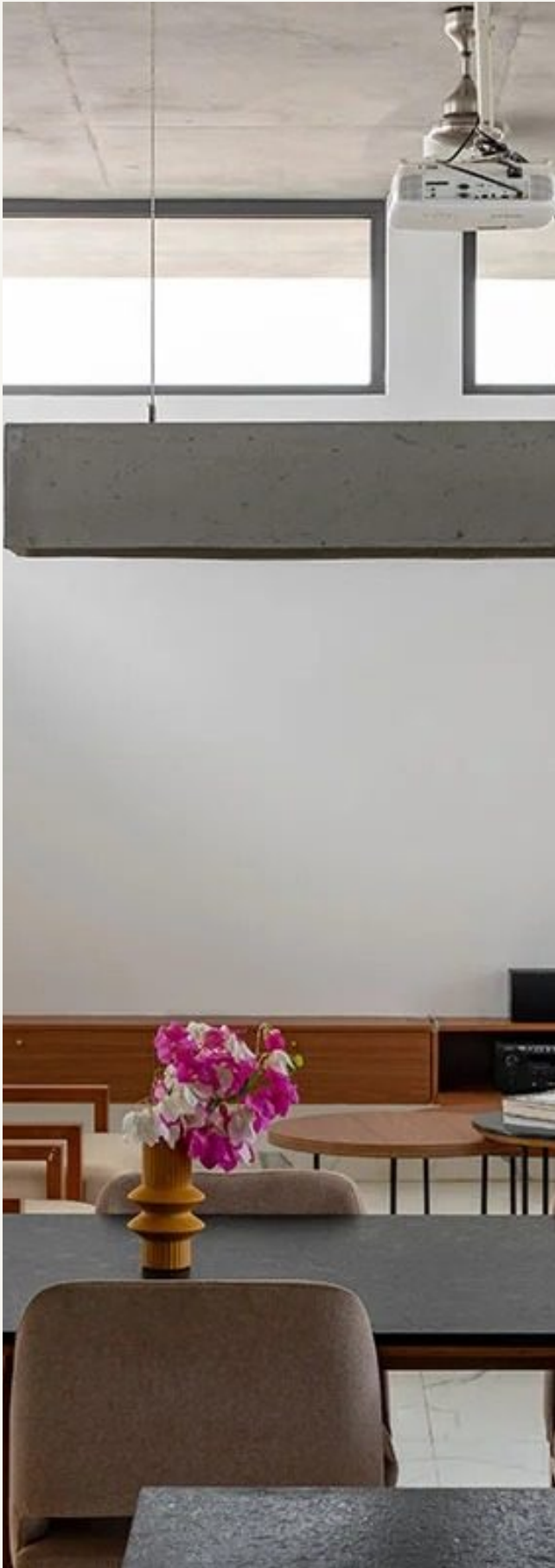
Corrosion-free by composition, colour-fast by powder coat or anodisation, non-flammable by nature. And — when its century of service ends — fully and infinitely recyclable.

All Ventino systems are tested and certified to international wind-pressure, water-tightness, and air-permeability standards.

A HOUSE MADE OF LIGHT

The White House.

Pristine white surfaces, generous glazing, and the kind of restraint that makes the garden the loudest thing in the room.



DOUBLE-HEIGHT DINING · FACING THE FAMILY PUJA

LIGHT, AND WHERE IT LIVES

A house that *whispers, but clearly.*

The architect described the brief as “a tropical Scandinavian villa, in Bengaluru.” The owners wanted a quiet house, a young family’s house — one that handled monsoon, summer heat, and the city’s relentless construction noise, while still feeling open to the garden.

Our 35 Pro slim sliders carry the ground-floor garden wall. The double-height dining room is held by fixed glazing in a black powder-coat — an industrial-warehouse grid, but softer and quieter. Upstairs, the bedrooms open onto deep balconies through casement units that tilt-and-turn for ventilation in the cooler months.

A single design rule connects every opening: the frame disappears against the wall, and the glass disappears against the garden.

SYSTEMS USED

- Ventino 35 Pro Slider
- Ventino 40 Casement
- Fixed glazing units

SPECIFICATION

- Acoustic-laminated DGU
- Anthracite black powder-coat
- Tilt-and-turn hardware

“It is a house that takes a long time to notice. That is, I think, the highest compliment.”

— OWNER, PROJECT FOUR

FROM FIRST SKETCH TO FINAL SEAL

A long quiet conversation, *in seven steps.*

01	The site visit	A Ventino consultant visits at any stage. No charge, no obligation. We listen, measure, and photograph.
02	The specification	We translate your drawings into a per-opening spec — system, glass, finish, hardware — and price it transparently.
03	The samples	Finish chips, glass samples, hardware in your hand — so the colour you pick is the colour you get.
04	The shop drawings	A full set of fabrication drawings, returned to your architect for sign-off. Nothing goes into production until approved.
05	The fabrication	Built in our own workshop, by our own team — never sub-contracted. Quality-checked at every stage.
06	The installation	Our fitters arrive in sequence with your site — coordinating with the architect, the contractor, and the interiors team.
07	The aftercare	Every installation comes with a 10-year structural warranty and a service relationship that lasts as long as the home does.

+	<i>And one thing we don't do</i>	We don't fit our windows to suit our calendar. We fit them to suit yours.
---	----------------------------------	---

THE VENTINO COLOUR LIBRARY

Thirty finishes. Only the right one.

Every Ventino frame is finished to last a generation. Powder-coated paint and anodised metal: two coating ranges, four palettes, infinite specificity. Below, a curated selection.

RANGE I · POWDER COATING · THE ELEMENTS



RANGE II · ANODISING · URBANE



THE VENTINO GUARANTEE

A ten-year promise, *and a longer relationship.*

Every Ventino installation is covered by a full ten-year structural warranty — on the profiles, the powder coat, the anodisation, the hardware, and the watertight seal. Five years on the moving parts. Lifetime on the engineering.

More important than the paperwork: we install only what we make, and we service only what we have installed. When you call us, the person on the other end already knows your house.

COVERED IN FULL

Aluminium profile structural integrity

Powder coat and anodisation finish

EPDM gasket sealing

Multipoint locks and roller hardware

Glazing seal integrity (insulating units)

How long does a typical installation take?

For a three-bedroom home, eight to ten weeks from approved drawings to the last seal. Larger projects scale roughly in proportion.

Can you retrofit an existing home?

Yes — and we do it often. The plaster lines, wall thicknesses and existing finishes all dictate the system. We recommend what suits the building, not the catalogue.

Do you supply only, or supply & install?

We supply and install. The warranty applies to the complete installation — never just the parts. We've found this is the only way to stand behind the work.

Can I see your work in person?

Yes. With the homeowner's permission, we arrange a visit to a finished project near you — often the most useful hour you'll spend on the decision.

What does it cost?

We are rarely the cheapest, and rarely the most expensive. The price depends on the system, the glass, the finish, and the opening. We quote transparently — and itemised — at the specification stage.

BEYOND THE FOUR FEATURED HOUSES

A wider portfolio, *in brief.*

The four projects in this book are a selection. The work continues — across cities, across briefs, across the careful collaborations that make new houses worth living in. Full project sheets and site visits to recently completed homes are available on request.



MUMBAI • 2024 • THE LOUVRE HOUSE



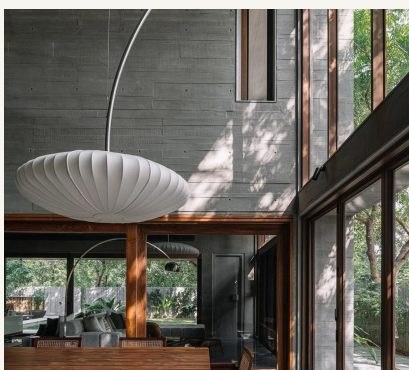
AHMEDABAD • 2025 • THE STACK



SURAT • 2024 • ELEMENT HOUSE



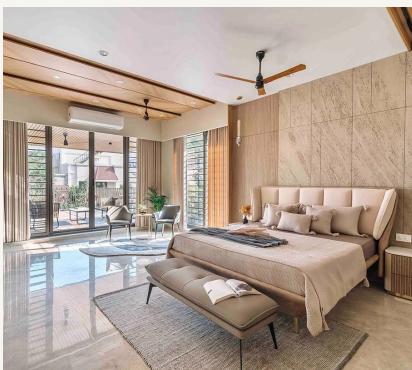
VADODARA • 2025 • THE LIBRARY



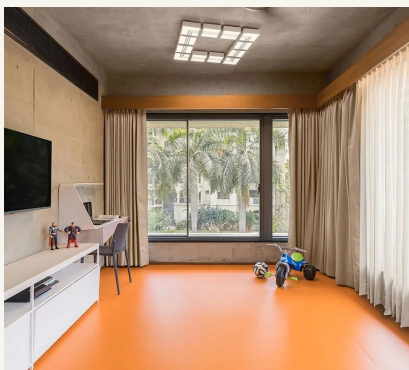
PUNE • 2025 • THE CONCRETE PAVILION



GOA • 2026 • GARDEN BUNGALOW



HYDERABAD • 2025 • THE BEDROOM



BENGALURU • 2026 • SITTING ROOM



CHENNAI • 2024 • THE TOWNHOUSE

GET IN TOUCH

Every door opens a story.
*Every window
frames a dream.*

SERVICE · TOLL-FREE

1800 309 0280

For existing customers, service requests, and warranty support.

SALES & NEW PROJECTS

+91 96506 70009

+91 98101 62315

For new projects, site visits, and architect collaborations.

STUDIO & ONLINE

ventino.in

ventinowindows@gmail.com

rish.ventino@gmail.com